



VHLR

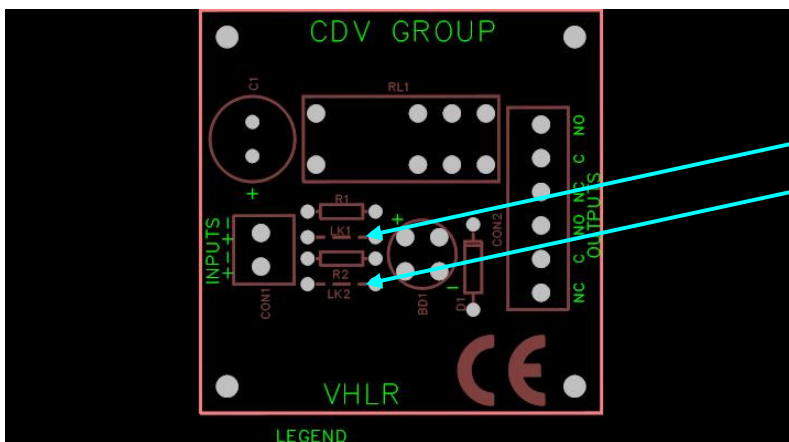
Very Handy Little Relay

GENERAL

Thank you for purchasing the VHLR relay from CDV. This device provides dual change over contacts rated at 5Amps for general purpose use. The input trigger voltage will operate from 12 to 30 Volts DC or AC. When using trigger voltages over 18 Volts and 24 Volts there are links to cut on the PCB as indicated in the drawing below.

DESCRIPTION

The VHLR will provide two independent changeover contacts for general purpose use. When a trigger voltage is applied at the input terminals both contacts will change state. Please measure your input trigger voltage prior to connecting this to the VHLR. If the voltage equals or exceeds 18 Volts then please cut the appropriate link. If the input voltage equals or exceeds 24 Volts then please cut both links. Failure to cut the link or links with input voltages exceeding 18 Volts will cause the premature failure of the relay.



Cut link $\geq 18V$

Cut both links $\geq 24V$

TECHNICAL SPECIFICATION

| Description | Value | Unit | Notes |
|-------------------|-------|--------|--|
| Input Voltage | 12-30 | Volts | AC or DC |
| Switching Current | 5 | Amps | Inductive or non-inductive at 30Volts DC or AC |
| IP Rating | 44 | | Internal use only |
| Warranty | 24 | Months | Return to manufacturer warranty |
| Compliance | | | CE, ROHS & WEEE |



CDV (UK) Ltd: 2006, All rights reserved.